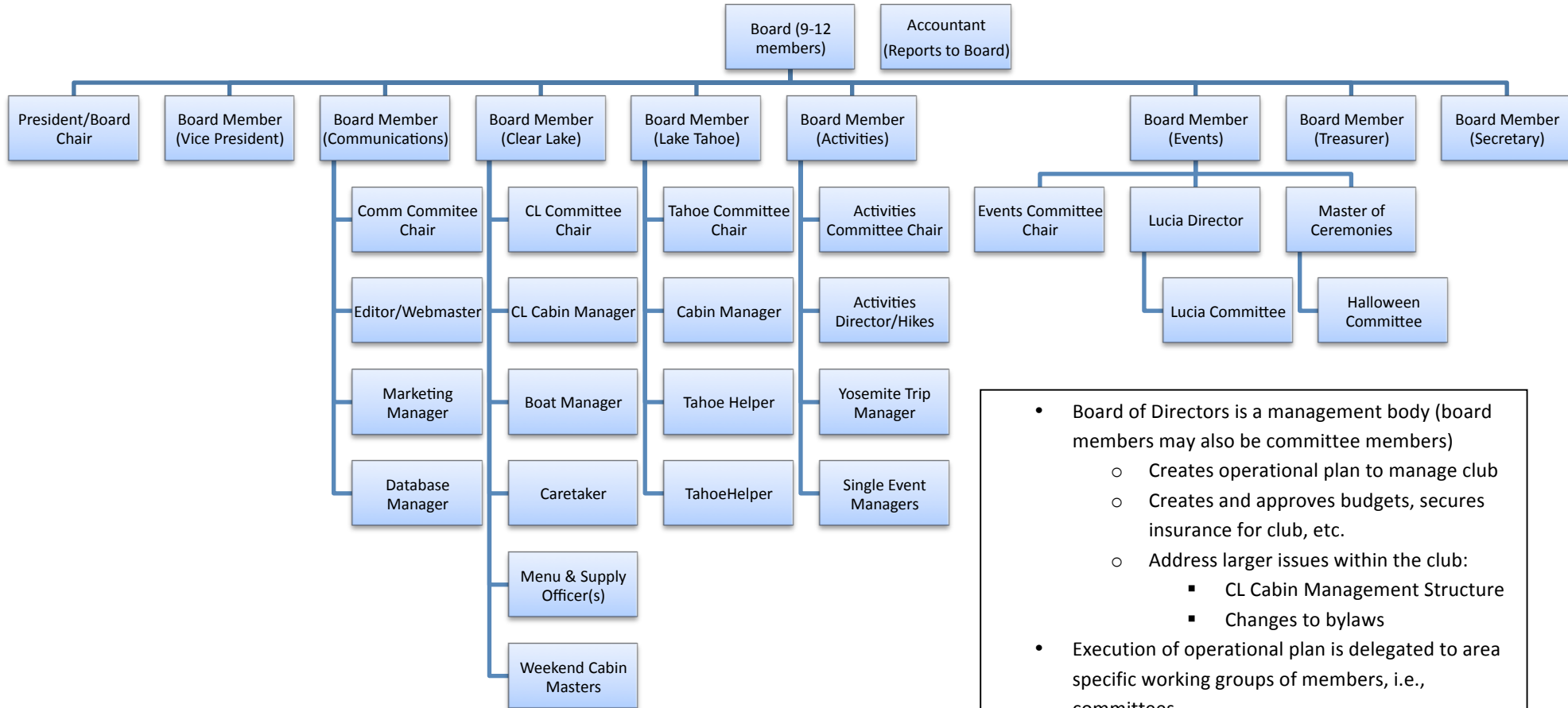


YSC Proposed Corporate Structure

Board of Directors and Committee Working Groups



- Board of Directors is a management body (board members may also be committee members)
 - Creates operational plan to manage club
 - Creates and approves budgets, secures insurance for club, etc.
 - Address larger issues within the club:
 - CL Cabin Management Structure
 - Changes to bylaws
- Execution of operational plan is delegated to area specific working groups of members, i.e., committees
 - Committees are subordinate to board, but manage their specific areas
 - Ideally, at least one board members will serve on main committees
 - Schedule their own meetings as they see fit in the manner they see fit
 - Execute responsibilities as laid out by the board